



**Submission Data for 2020-2021 CORE conference Ranking process  
(Submitted as a comparator for European Conference on Modelling Foundations and Applications )**

Antonio Vallecillo, Richard Paige, Martin Gogolla, Loli Burgueñas

## Conference Details

### Conference

Title: International Conference on Software Language Engineering

Acronym : SLE

Rank: B

### DBLP Link

DBLP url: <https://dblp.uni-trier.de/db/conf/sle>

### Recent Years

#### Proceedings Publishing Style

Proceedings Publishing: series

Link to most recent proceedings: <https://dl.acm.org/doi/proceedings/10.1145/3426425>

Further details: Publisher: ACM Sponsor: ACM SIGPLAN

Since 2014, the conference is co-located with SPLASH (ACM SIGPLAN conference on Systems, Programming, Languages, and Applications: Software for Humanity).

SLE publishes research papers, tool papers and new ideas/vision papers. There is no distinction in the proceedings between these types of papers but there are rules: - Tool paper titles must start with "Tool Demo:" - Vision papers cannot exceed 5 pages. In the preface, the chairs report the overall acceptance rates and the acceptance rates for each type of papers.

### Most Recent Years

#### Most Recent Year

Year: 2019

URL: <http://www.sleconf.org/2019/>

Location: Athens, Greece

Papers submitted: 42

Papers published: 20

Acceptance rate: 48

Source for numbers: <https://dl.acm.org/action/showFmPdf?doi=10.1145%2F3357766>

### General Chairs

Name: Oscar Nierstrasz

Affiliation: University of Bern, Switzerland

Gender: M

H Index: 52

GScholar url: <https://scholar.google.com/citations?hl=en&user=Yi00hUYAAAAJ>

DBLP url: <https://dblp.uni-trier.de/pid/n/ONierstrasz.html>

### Program Chairs

Name: Jeff Gray  
Affiliation: University of Alabama, USA  
Gender: M  
H Index: 41  
GScholar url: <https://scholar.google.com/citations?user=83an81YAAAAJ&hl=en&inst=12853143141699445592&oi=ao>  
DBLP url: <https://dblp.uni-trier.de/pid/g/JeffreyGGray.html>

Name: Bruno C. d. S. Oliveira  
Affiliation: The University of Hong Kong, China  
Gender: M  
H Index: 21  
GScholar url: <https://scholar.google.com/citations?hl=en&user=cB-6X3gAAAAJ>  
DBLP url: <https://dblp.uni-trier.de/pid/20/7796.html>

### Second Most Recent Year

Year: 2018  
URL: <http://www.sleconf.org/2018/>  
Location: Boston, Massachusetts, USA  
Papers submitted: 46  
Papers published: 22  
Acceptance rate: 48  
Source for numbers: <https://dl.acm.org/action/showFmPdf?doi=10.1145%2F3276604>

### General Chairs

Name: David Pearce  
Affiliation: Victoria University of Wellington, New Zealand  
Gender: M  
H Index: 20  
GScholar url: <https://scholar.google.com/citations?hl=en&user=x2QxevkAAAAJ>  
DBLP url: <https://dblp.uni-trier.de/pid/p/DavidJPearce.html>

### Program Chairs

Name: Tanja Mayerhofer  
Affiliation: TU Wien, Vienna  
Gender: F  
H Index: 16  
GScholar url: <https://scholar.google.com/citations?hl=en&user=WKUy4cQAAAAJ>  
DBLP url: <https://dblp.uni-trier.de/pid/116/6700.html>

Name: Friedrich Steimann  
Affiliation: University of Hagen, Germany  
Gender: M  
H Index: 27  
GScholar url: <https://scholar.google.com/citations?hl=en&user=EfbKBJsAAAAJ>  
DBLP url: <https://dblp.uni-trier.de/pid/s/FriedrichSteimann.html>

### Third Most Recent Year

Year: 2017  
URL: <http://www.sleconf.org/2017/>  
Location: Vancouver, Canada  
Papers submitted: 57  
Papers published: 24  
Acceptance rate: 42  
Source for numbers: <https://dl.acm.org/doi/proceedings/10.1145/3136014>

### General Chairs

Name: Benoit Combemale  
Affiliation: University of Rennes 1, France and Inria, France  
Gender: M  
H Index: 28  
GScholar url: <https://scholar.google.com/citations?hl=en&user=VCAbjVYAAAAJ>  
DBLP url: <https://dblp.uni-trier.de/pid/24/757.html>

### Program Chairs

Name: Marjan Mernik Affiliation: University of Maribor, Slovenia Gender: M H Index: 38 GScholar url: <a href="https://scholar.google.com/citations?hl=en&amp;user=oq1syvMAAAAJ">https://scholar.google.com/citations?hl=en&amp;user=oq1syvMAAAAJ</a> DBLP url: <a href="https://dblp.uni-trier.de/pid/76/5882.html">https://dblp.uni-trier.de/pid/76/5882.html</a>
Name: Bernhard Rumpe Affiliation: RWTH Aachen University, Germany Gender: M H Index: 62 GScholar url: <a href="https://scholar.google.com/citations?user=nED1C7QAAAAJ&amp;hl=en">https://scholar.google.com/citations?user=nED1C7QAAAAJ&amp;hl=en</a> DBLP url: <a href="https://dblp.uni-trier.de/pid/r/BernhardRumpe.html">https://dblp.uni-trier.de/pid/r/BernhardRumpe.html</a>

### Google Scholar Metrics

Sub-category url: [https://scholar.google.com.au/citations?view\\_op=top\\_venues&hl=en&vq=eng\\_softwaresystems](https://scholar.google.com.au/citations?view_op=top_venues&hl=en&vq=eng_softwaresystems)

Position in sub-category: 20+

Image of top 20: [http://portal.core.edu.au/core/media/changes\\_h5/top20\\_OMS5qct.PNG](http://portal.core.edu.au/core/media/changes_h5/top20_OMS5qct.PNG)

Categories > Engineering & Computer Science > Software Systems ▾

	Publication	<u>h5-index</u>	<u>h5-median</u>
1.	ACM/IEEE International Conference on Software Engineering	<u>74</u>	111
2.	Journal of Systems and Software	<u>61</u>	90
3.	Information and Software Technology	<u>59</u>	90
4.	ACM SIGSOFT International Symposium on Foundations of Software Engineering	<u>53</u>	78
5.	Empirical Software Engineering	<u>53</u>	75
6.	IEEE Transactions on Software Engineering	<u>52</u>	77
7.	ACM SIGPLAN-SIGACT Symposium on Principles of Programming Languages (POPL)	<u>48</u>	76
8.	ACM SIGPLAN Conference on Programming Language Design and Implementation (PLDI)	<u>46</u>	78
9.	IEEE/ACM International Conference on Automated Software Engineering (ASE)	<u>45</u>	75
10.	IEEE Software	<u>44</u>	90
11.	Symposium on Operating Systems Principles	<u>42</u>	77
12.	Software & Systems Modeling	<u>41</u>	55
13.	Mining Software Repositories	<u>40</u>	52
14.	International Conference on Software Analysis, Evolution, and Reengineering (SANER)	<u>40</u>	48
15.	International Symposium on Software Testing and Analysis	<u>36</u>	61
16.	International Conference on Tools and Algorithms for the Construction and Analysis of Systems (TACAS)	<u>33</u>	54
17.	IEEE International Conference on Software Maintenance and Evolution	<u>33</u>	46
18.	Proceedings of the ACM on Programming Languages	<u>31</u>	46
19.	Software: Practice and Experience	<u>30</u>	36
20.	ACM SIGPLAN International Conference on Object-Oriented Programming, Systems, Languages, and Applications (OOPSLA)	<u>29</u>	44

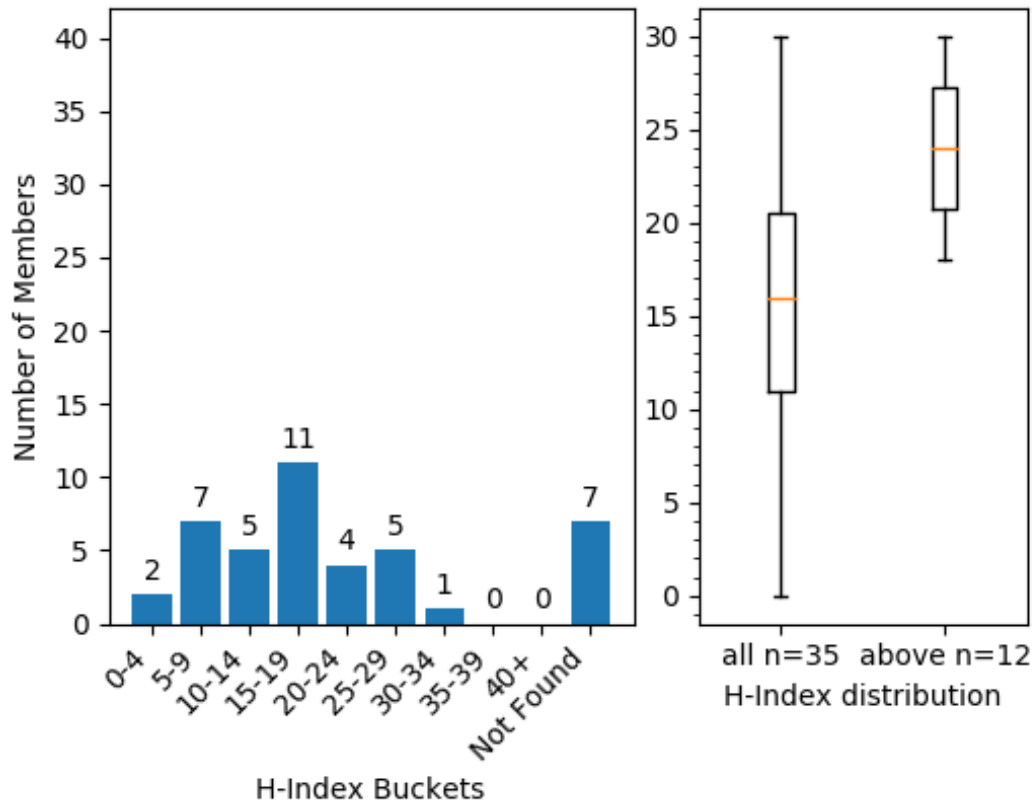
No Google Scholar h5 index available for this conference

Potential reason for no h5 index: The conferences in the top-20 are usually generic conferences addressing software engineering or very broad subtopics. They are very well known and its papers are highly cited, which translates in good indexes. On the contrary, SLE focuses on software languages (which is a subfield) and attracts people working on this topic. This translates in less citations, which does not mean that the quality of those works is not as good as the quality of works published in top conferences.

### (Senior) Program Committee

Link to (s)pc: <http://www.sleconf.org/sc/>

File: [http://portal.core.edu.au/core/media/conf\\_submissions\\_spc\\_file/SLE\\_SC\\_PC\\_aq8JGZ5.txt](http://portal.core.edu.au/core/media/conf_submissions_spc_file/SLE_SC_PC_aq8JGZ5.txt)  
H-index plot: [http://portal.core.edu.au/core/media/conf\\_submissions\\_hindex\\_plots/hindex\\_buckets\\_249.png](http://portal.core.edu.au/core/media/conf_submissions_hindex_plots/hindex_buckets_249.png)  
Information Contained within this graph is derived using the Elsevier Scopus Database 2021.



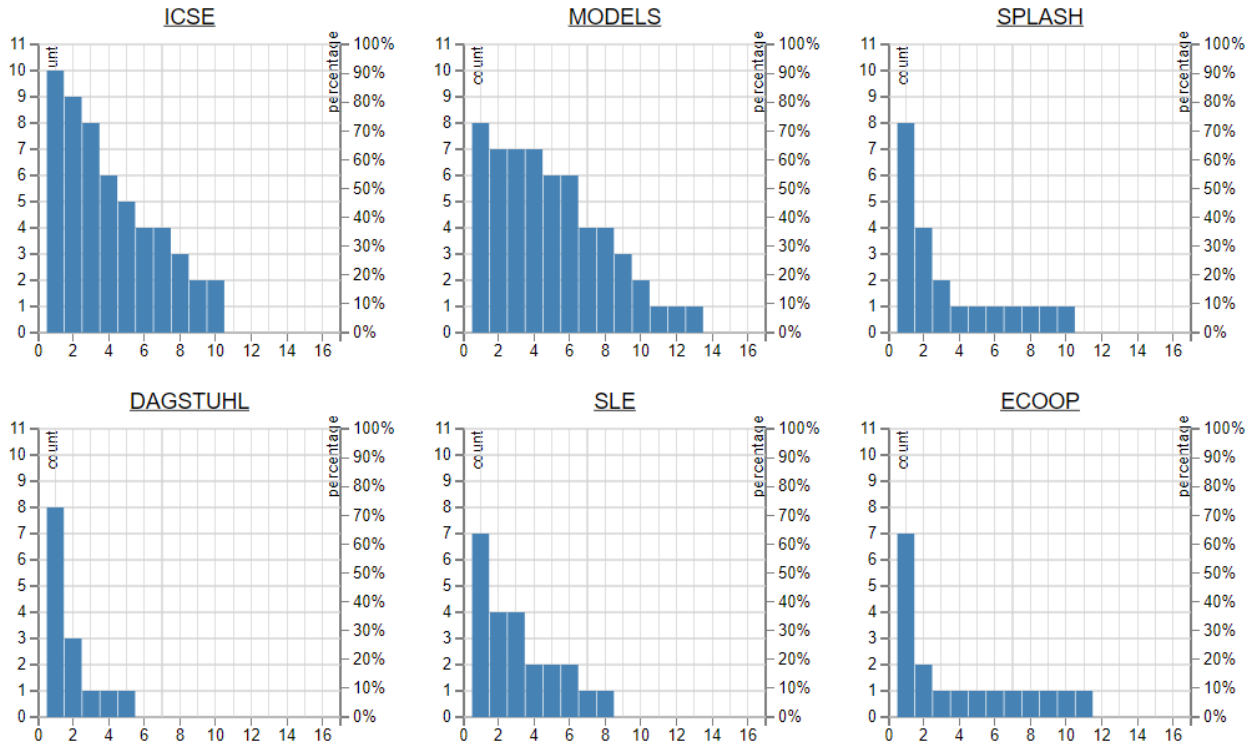
### Where people publish

### Top (Senior) Program Committee Members

Generated Report Name: [conf\\_submissions\\_top\\_spc/Comparator249\\_top\\_spc.csv](#)

WPP Report: [http://portal.core.edu.au/core/media/conf\\_rank\\_report/comparator249\\_spc\\_report.txt](http://portal.core.edu.au/core/media/conf_rank_report/comparator249_spc_report.txt)

Graphs: [http://portal.core.edu.au/core/media/conf\\_rank\\_graphs/comparator249\\_spc\\_graph.PNG](http://portal.core.edu.au/core/media/conf_rank_graphs/comparator249_spc_graph.PNG)



Reference item: \ 5. Software Language Engineering (SLE)

-----  
 This conference was published at 28 times by 7 of 11 experts in the last 15 years.

The experts that publish at this conference are: Benot Combemale(11), Bernhard Rumpe(2), Olivier Barais(3), Ralf Lmmel(10), Marsha Chechik(1), Davide Di Ruscio(2), Martin Erwig(3)

In 2009, there were 2 publications by 2 experts: Martin Erwig, Ralf Lmmel  
 In 2010, there were 5 publications by 3 experts: Davide Di Ruscio, Ralf Lmmel, Martin Erwig  
 In 2011, there were 2 publications by 2 experts: Martin Erwig, Ralf Lmmel  
 In 2012, there were 1 publications by 1 experts: Benot Combemale  
 In 2013, there were 3 publications by 3 experts: Benot Combemale, Olivier Barais, Ralf Lmmel  
 In 2014, there were 1 publications by 1 experts: Ralf Lmmel  
 In 2015, there were 3 publications by 2 experts: Benot Combemale, Olivier Barais  
 In 2016, there were 2 publications by 2 experts: Benot Combemale, Ralf Lmmel  
 In 2017, there were 1 publications by 1 experts: Ralf Lmmel  
 In 2018, there were 6 publications by 3 experts: Benot Combemale, Bernhard Rumpe, Marsha Chechik  
 In 2019, there were 2 publications by 3 experts: Benot Combemale, Olivier Barais, Ralf Lmmel

7 out of the 11 experts published at this conference in 1 or more years  
 4 out of the 11 experts published at this conference in 3 or more years  
 2 out of the 11 experts published at this conference in 6 or more years  
 1 out of the 11 experts published at this conference in 8 or more years