



**Submission data for 2023 CORE conference ranking process**  
**CollaborateCom - EAI International Conference on Collaborative Computing: Networking, Applications and Worksharing**

Stephen McGarry

## **Introductory Questions**

### **Conference**

Title: CollaborateCom - EAI International Conference on Collaborative Computing: Networking, Applications and Worksharing  
Acronym : CollaborateCom

### **Requested Rank**

Rank: C

### **Primarily CS**

Is this conference primarily a CS venue: True

### **Location**

Not commonly held within a single country, set of countries, or region.

### **DBLP Link**

DBLP url: <https://dblp.org/db/conf/colcom/index.html>

### **FoR Codes**

For1: 4606  
For2: SELECT  
For3: SELECT

### **Conference Details**

Month: October  
Publisher: Springer  
Bi-annual: False  
Multiconference: False  
Component in a multi-conference or umbrella event: False  
Colocated with other events: False  
Alternative content: False

### **Proceedings Publishing Style**

Proceedings Publishing: series  
Link to most recent proceedings: <https://link.springer.com/conference/colcom>  
Further details:

### **Most Recent Years**

### **Most Recent Year**

Year: 2022

URL: <https://collaboratecom.eai-conferences.org/2022/>

Location: Hangzhou, People's Republic of China

Papers submitted: 171

Papers published: 57

Acceptance rate: 33

Source for numbers: <https://eai.eu/eai-published-conferences/?swcfpc=1>

### General Chairs

Name: Honghao Gao Affiliation: Shanghai University Gender: M H Index: 39 GScholar url: <a href="https://scholar.google.com/citations?user=PiiIpJIAAAAJ&amp;hl=en">https://scholar.google.com/citations?user=PiiIpJIAAAAJ&amp;hl=en</a> DBLP url: <a href="https://dblp.org/pid/85/9062.html">https://dblp.org/pid/85/9062.html</a>
Name: Xinheng Wang Affiliation: Xi'an Jiaotong-Liverpool University Gender: M H Index: 28 GScholar url: <a href="https://scholar.google.com/citations?user=TeoBMbgAAAAJ&amp;hl=en">https://scholar.google.com/citations?user=TeoBMbgAAAAJ&amp;hl=en</a> DBLP url: <a href="https://dblp.org/pid/80/1854.html">https://dblp.org/pid/80/1854.html</a>
Name: Wei Wei Affiliation: Zhejiang University City College Gender: M H Index: 17 GScholar url: <a href="https://scholar.google.com/citations?user=y-bTTcQAAAAJ&amp;hl=en">https://scholar.google.com/citations?user=y-bTTcQAAAAJ&amp;hl=en</a> DBLP url: <a href="https://dblp.org/pid/24/4105-24.html">https://dblp.org/pid/24/4105-24.html</a>
Name: Tasos Dagiuklas Affiliation: London South Bank University Gender: M H Index: 25 GScholar url: <a href="https://scholar.google.com/citations?user=cnJIP2kAAAAJ&amp;hl=en">https://scholar.google.com/citations?user=cnJIP2kAAAAJ&amp;hl=en</a> DBLP url: <a href="https://dblp.org/pid/59/5712.html">https://dblp.org/pid/59/5712.html</a>

### Program Chairs

Name: Yuyu Yin Affiliation: HangZhou DianZi University Gender: M H Index: 26 GScholar url: <a href="https://scholar.google.com.hk/citations?user=cVFepGUAAAAJ&amp;hl=th">https://scholar.google.com.hk/citations?user=cVFepGUAAAAJ&amp;hl=th</a> DBLP url: <a href="https://dblp.org/pid/15/4530.html">https://dblp.org/pid/15/4530.html</a>
Name: Tun Lu Affiliation: Fudan University Gender: M H Index: 18 GScholar url: <a href="https://scholar.google.com.hk/citations?user=VYEL_GQAAAAJ&amp;hl=en">https://scholar.google.com.hk/citations?user=VYEL_GQAAAAJ&amp;hl=en</a> DBLP url: <a href="https://dblp.org/pid/41/2472.html">https://dblp.org/pid/41/2472.html</a>
Name: Minghui Wu Affiliation: Zhejiang University City College Gender: M H Index: 9 GScholar url: <a href="https://scholar.google.com/citations?user=KqSSa-kAAAAJ&amp;hl=en">https://scholar.google.com/citations?user=KqSSa-kAAAAJ&amp;hl=en</a> DBLP url: <a href="https://dblp.org/pid/97/6864.html">https://dblp.org/pid/97/6864.html</a>
Name: Iqbal Muddesar Affiliation: London South Bank University Gender: M H Index: 18 GScholar url: <a href="https://scholar.google.com/citations?user=tRlCrQAAAAJ&amp;hl=en">https://scholar.google.com/citations?user=tRlCrQAAAAJ&amp;hl=en</a> DBLP url: <a href="https://dblp.org/pid/19/8080.html">https://dblp.org/pid/19/8080.html</a>

### Second Most Recent Year

Year: 2021

URL: <https://collaboratecom.eai-conferences.org/2021/>

Location: Suzhou, People's Republic of China

Papers submitted: 211  
Papers published: 61  
Acceptance rate: 29  
Source for numbers: <https://eai.eu/eai-published-conferences/?swcfpc=1>

### General Chairs

Name: Xinheng Wang Affiliation: Xi'an Jiaotong-Liverpool University Gender: M H Index: 28 GScholar url: <a href="https://scholar.google.com/citations?user=TeoBMbgAAAAJ&amp;hl=en">https://scholar.google.com/citations?user=TeoBMbgAAAAJ&amp;hl=en</a> DBLP url: <a href="https://dblp.org/pid/80/1854.html">https://dblp.org/pid/80/1854.html</a>
Name: Honghao Gao Affiliation: Shanghai University Gender: M H Index: 39 GScholar url: <a href="https://scholar.google.com/citations?user=PiiIpJIAAAAAJ&amp;hl=en">https://scholar.google.com/citations?user=PiiIpJIAAAAAJ&amp;hl=en</a> DBLP url: <a href="https://dblp.org/pid/85/9062.html">https://dblp.org/pid/85/9062.html</a>
Name: Yuanyuan Yang Affiliation: State University of New York Gender: F H Index: 65 GScholar url: <a href="https://scholar.google.com/citations?user=sPD AJ7MAAAA J&amp;hl=en">https://scholar.google.com/citations?user=sPD AJ7MAAAA J&amp;hl=en</a> DBLP url:
Name: Eng Gee Lim Affiliation: Xi'an Jiaotong-Liverpool University Gender: M H Index: 25 GScholar url: <a href="https://scholar.google.com/citations?user=zHw8eegAAAAJ&amp;hl=en">https://scholar.google.com/citations?user=zHw8eegAAAAJ&amp;hl=en</a> DBLP url:

### Program Chairs

Name: Kaizhu Huang Affiliation: Xi'an Jiaotong-Liverpool University Gender: M H Index: 24 GScholar url: DBLP url: <a href="https://dblp.org/pid/99/3390.html">https://dblp.org/pid/99/3390.html</a>
Name: Tun Lu Affiliation: Fudan University Gender: M H Index: 18 GScholar url: <a href="https://scholar.google.com.hk/citations?user=VYEL_GQAAAAJ&amp;hl=en">https://scholar.google.com.hk/citations?user=VYEL_GQAAAAJ&amp;hl=en</a> DBLP url:
Name: Honghao Gao Affiliation: Shanghai University Gender: M H Index: 39 GScholar url: <a href="https://scholar.google.com/citations?user=PiiIpJIAAAAAJ&amp;hl=en">https://scholar.google.com/citations?user=PiiIpJIAAAAAJ&amp;hl=en</a> DBLP url: <a href="https://dblp.org/pid/85/9062.html">https://dblp.org/pid/85/9062.html</a>

### Third Most Recent Year

Year: 2020  
URL: <https://collaboratecom.eai-conferences.org/2020/>  
Location: Shanghai, PRC  
Papers submitted: 121  
Papers published: 54  
Acceptance rate: 45  
Source for numbers: <https://eai.eu/eai-published-conferences/?swcfpc=1>

### General Chairs

<p>Name: Ning Gu  Affiliation: Fudan University  Gender: M  H Index: 25  GScholar url: <a href="https://scholar.google.com.au/citations?user=AUnPpaUAAAAJ&amp;hl=en">https://scholar.google.com.au/citations?user=AUnPpaUAAAAJ&amp;hl=en</a>  DBLP url:</p>
<p>Name: Jianwei Yin  Affiliation: Zhejiang University  Gender: M  H Index: 35  GScholar url: <a href="https://scholar.google.com/citations?user=0s1A5fwAAAAJ&amp;hl=en">https://scholar.google.com/citations?user=0s1A5fwAAAAJ&amp;hl=en</a>  DBLP url:</p>
<p>Name: Xinheng Wang  Affiliation: Xi'an Jiaotong-Liverpool University  Gender: M  H Index: 28  GScholar url: <a href="https://scholar.google.com/citations?user=TeoBMBgAAAAJ&amp;hl=en">https://scholar.google.com/citations?user=TeoBMBgAAAAJ&amp;hl=en</a>  DBLP url: <a href="https://dblp.org/pid/80/1854.html">https://dblp.org/pid/80/1854.html</a></p>

**Program Chairs**

<p>Name: Honghao Gao  Affiliation: Shanghai University  Gender: M  H Index: 39  GScholar url: <a href="https://scholar.google.com/citations?user=PiiIpJIAAAAAJ&amp;hl=en">https://scholar.google.com/citations?user=PiiIpJIAAAAAJ&amp;hl=en</a>  DBLP url: <a href="https://dblp.org/pid/85/9062.html">https://dblp.org/pid/85/9062.html</a></p>
<p>Name: Yuyu Yin  Affiliation: Hangzhou Dianzi University  Gender: M  H Index: 26  GScholar url: <a href="https://scholar.google.com/citations?user=cVFePGUAAAAJ&amp;hl=en">https://scholar.google.com/citations?user=cVFePGUAAAAJ&amp;hl=en</a>  DBLP url:</p>
<p>Name: Muddesar Iqbal  Affiliation: London South Bank University  Gender: M  H Index: 18  GScholar url: <a href="https://scholar.google.com/citations?user=tRlCrQQAAAAJ&amp;hl=en">https://scholar.google.com/citations?user=tRlCrQQAAAAJ&amp;hl=en</a>  DBLP url:</p>

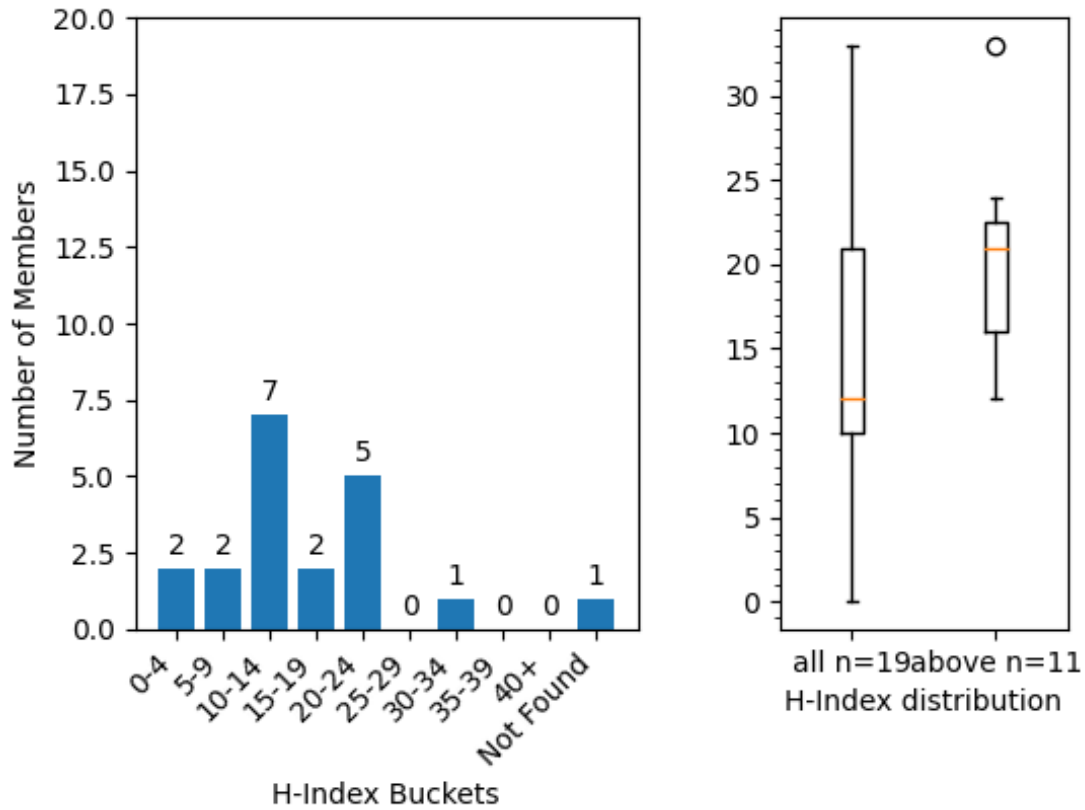
**Policies**

Chair Selection: <https://eai.eu/general-chair/?swcfpc=1>  
No Policies.

**Program Committee**

Link to pc: <https://collaboratecom.eai-conferences.org/2022/technical-program-committee/>  
File: [http://portal.core.edu.au/core/media/2023/pc\\_members/collaboratecom\\_2022.txt](http://portal.core.edu.au/core/media/2023/pc_members/collaboratecom_2022.txt)  
H-index plot: [http://portal.core.edu.au/core/media/2023/pc\\_graphs/addrank\\_hindex\\_buckets\\_2311.png](http://portal.core.edu.au/core/media/2023/pc_graphs/addrank_hindex_buckets_2311.png)

Information contained within these graphs is derived using the Elsevier Scopus Database 2023.  
Scopus h-index is generally about 30% lower than Google Scholar h-index.



**Publishing of established researchers in the PC**

[http://portal.core.edu.au/core/media/2023/conf\\_submissions\\_clean\\_spc/addrank2311\\_spc\\_report.csv](http://portal.core.edu.au/core/media/2023/conf_submissions_clean_spc/addrank2311_spc_report.csv)

**WPP Report:** [http://portal.core.edu.au/core/media/2023/wpp\\_reports/TiuBREoU.txt](http://portal.core.edu.au/core/media/2023/wpp_reports/TiuBREoU.txt)

1. International Conference on Collaborative Computing: Networking, Applications and Worksharing (CollaborateCom)  
Core Rank: C

-----

This venue was published at 28 times by 7 of 8 individuals in the last 5+ years.

The individuals that publish at this venue are: Honghao Gao(10), Shizhan Chen(6), Li Kuang(5), Xiaoxian Yang(3), Yucong Duan(3), Yuyu Yin(3), Lizhen Cui(1)

In 2018, there were 4 publications by 3 individuals: Honghao Gao, Li Kuang, Xiaoxian Yang

In 2019, there were 8 publications by 5 individuals: Honghao Gao, Li Kuang, Lizhen Cui, Xiaoxian Yang, Yuyu Yin

In 2020, there were 8 publications by 5 individuals: Honghao Gao, Li Kuang, Shizhan Chen, Yucong Duan, Yuyu Yin

In 2021, there were 3 publications by 2 individuals: Honghao Gao, Li Kuang

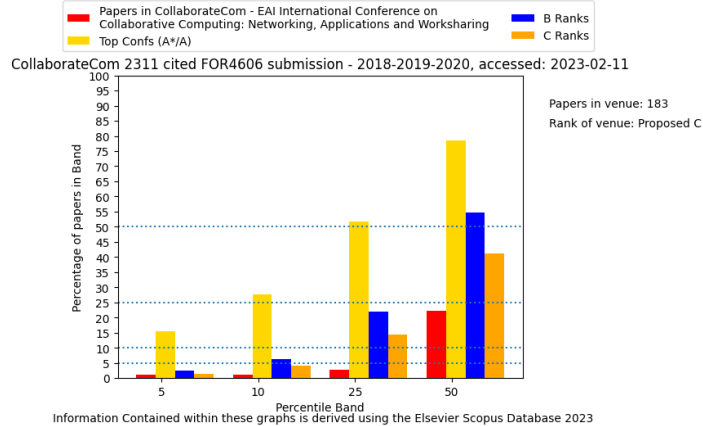
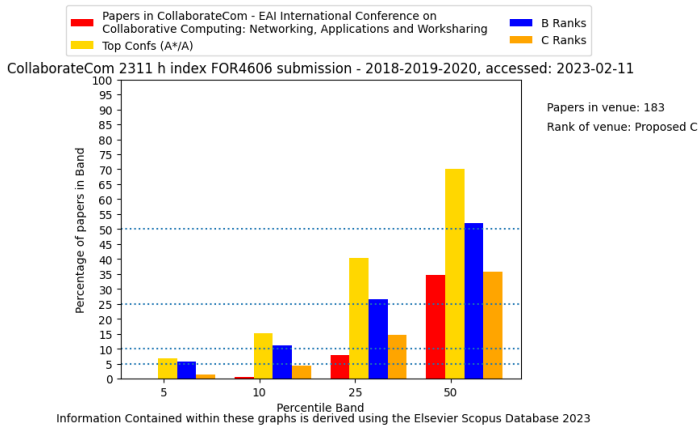
In 2022, there were 5 publications by 2 individuals: Shizhan Chen, Yucong Duan

7 out of the 8 individuals published at this venue in 1 or more years

6 out of the 8 individuals published at this venue in 2 or more years

2 out of the 8 individuals published at this venue in 4 or more years

**Centile graphs of paper metrics**



## Top People Involvement

Not Providing Involvement

## Additional Data

### Google Scholar Data

Sub-category url: [https://scholar.google.com.au/citations?view\\_op=top\\_venues&hl=en&vq=eng\\_computingsystems](https://scholar.google.com.au/citations?view_op=top_venues&hl=en&vq=eng_computingsystems)

Position in sub-category: 13

h5 index of 20th item in category: 42

No Google Scholar h5 index available for this conference

Potential reason for no h5 index: Unknown

### Relationship to similar conferences

Partial ordering of similar conferences in the area, with argument as to where the current venue fits and why:

IEEE International Conference On Cloud Computing Cloud Expo Europe International Conference on Cloud Computing and Services

Science Cloud Fest CCGrid Dublin Tech Summit Big Data Expo

Conferences have a similar focus; CollaborateCom also integrates edge computing, machine learning IoT etc and practical collaborative computing engineering and performance.

### Other Information

#### Attachments

N/A

#### Proposers

First name: Stephen

Last name: McGarry

Affiliation: EAI

Email: [stephen.mcgarry@eai.eu](mailto:stephen.mcgarry@eai.eu)

#### Submitted By

Name: McGarry Steve

Email: [s.mcgarry@hotmail.co.uk](mailto:s.mcgarry@hotmail.co.uk)